



Hyatt View Town Homes

By RBC, LLC.

Coming Spring 2019



Front Elevation



Rear Elevation



Rear Elevation

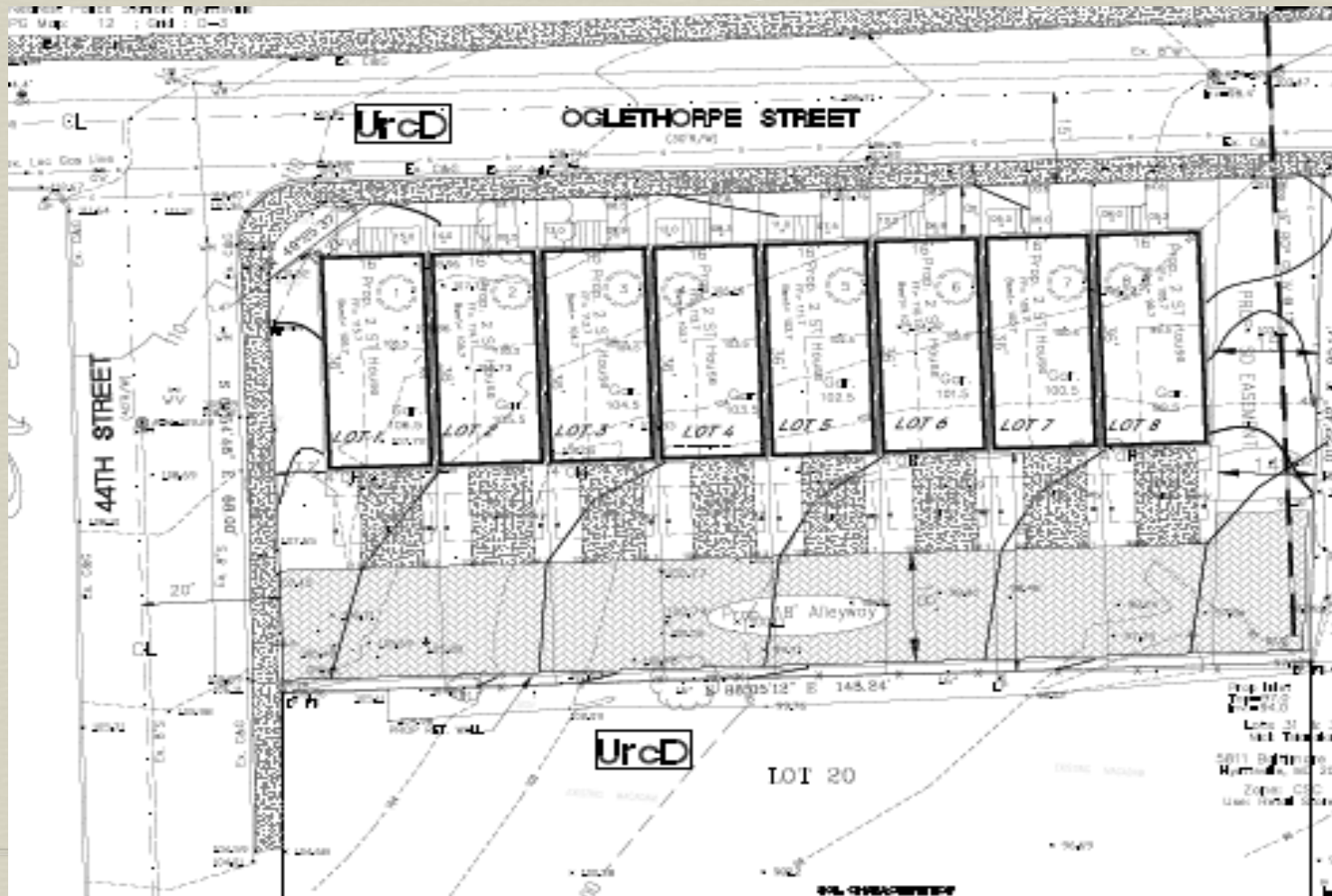
SCALE: No Scale

Side Elevation



Side Elevation
SCALE: No Scale

Site Plan



House Features



- 8 New Townhomes
- Four Levels Total
- Three Stories From Oglethorpe
- Finished Loft with Full Bath on 4th Floor
- Rear Alley Access to Garage
- 1940 Sq. ft. each

House Features



- French Inspired Architectural Design With Mansard Roof
- Stone/Stucco Front Facade
- Basement Garage With Additional Parking on Driveway
- 8'x12' Deck to Kitchen
- Rec. Room/Office in Basement
- 3 Bedroom
- 3 ½ Bathrooms
- Stainless Steel Appliances and Granite Surfaces
- Hardwood Floors

House Features



- Energy Saving Features:
 - Well Insulated Walls and Ceilings
 - Stop Air Infiltration
 - High Performance Double Glazed Low-E Windows
 - High Efficiency Air-condition/Heating system
 - Energy Saving Appliances

House Features



- ▣ Smart Home Features:
 - ▣ Robust Wi-Fi Network Coverage on All levels
 - ▣ Electronic Front Door Lock with Wi-Fi access
 - ▣ Programmable Thermostats
 - ▣ Door Bell With Camera
 - ▣ Occupancy Sensors in bathrooms to save electricity